

Art Knowledge Organiser - Painting

Key question: How do I work collaboratively using lines and contours?

Key Vocabulary

Starting point, natural forms, viewpoints, representing, weathered surfaces, shapes, spaces, abstract shapes, brushwork, response, acetate, simple, linear, outline, contour, enlarge, stains, dyes, adapt, transpose

Skills

- To respond to the work of artists Patrick Heron and Patrick Caulfield
- Use natural landscapes as a starting point to create own abstract painting
- To focus on line and contour in recording from direct observation
- To work collaboratively on a large scale to produce a group piece

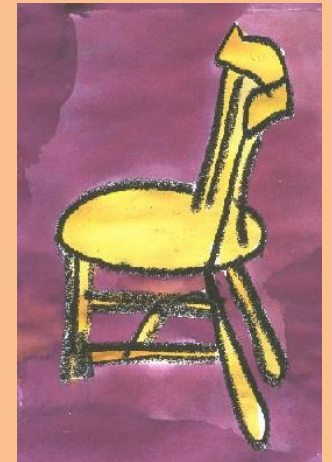
Facts

- Patrick Heron was a British painter born in 1920.
- His work was inspired by landscapes and he was known as a leading painter of his generation.
- Patrick Caulfield is a British painter and print maker born in 1936.
- His work is mainly of everyday objects with a simple coloured background and black outlines.

Examples



Patrick Heron



Patrick Caulfield