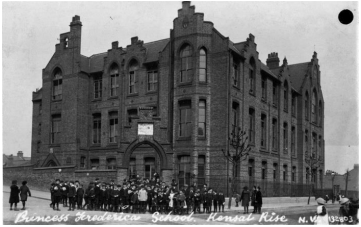


Princess Frederica of Hanover
1848-1926



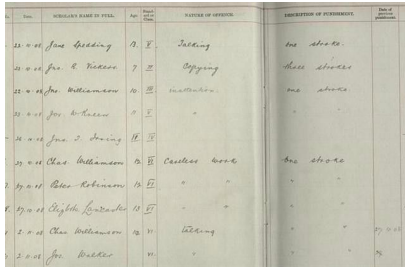
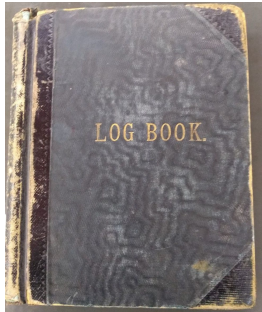
Year 5 Local History

Princess Frederica School: A day in the life of a Victorian child



The **Victorian era** was a period of great technological and social **change**. The **Industrial revolution** meant machines could now do the work of people much faster. Many people moved to towns and cities to work in factories because there were fewer jobs in **agriculture** (farming). This, and a huge population boom, resulted in very overcrowded cities and large areas of **slum** housing. Many children had to work in factories instead of attending school. Only wealthy children usually had access to good education.

The **Education and welfare acts** of the Victorian era resulted in the formation of new free schools, **Princess Frederica** being one of many to open in the local area. We can see directly what daily life was like for a Victorian child through the school's original **log book**. This documents everything from attendance to the **punishments** handed out to the children!



Victorian era

Queen Victoria's reign from **1837** until **1901**

Industrial Revolution

A time of transformation and mechanisation.

urban

An area of towns and cities where many people live and work.

slum

Poor housing area

Workhouse

Home for the poor

cane

Stick used for punishment

school log book

A book, like a diary, usually kept by the Head Teacher which includes daily life at the school.

Governess/tutor

Home teacher for rich children

1837	1878	1880	July 24th 1889	1891	1901
Victoria becomes Queen	Factory and Workshop Act banned the employment of children under 10	Education Act made it compulsory for children up to 12 to go to school, but most children had to pay	Princess Frederica of Hanover officially opens Princess Frederica School.	Education is free and compulsory for all 5-13 year olds	Queen Victoria dies after 63 years, 7 months and 2 days (the 2nd longest serving British monarch after Elizabeth II)